

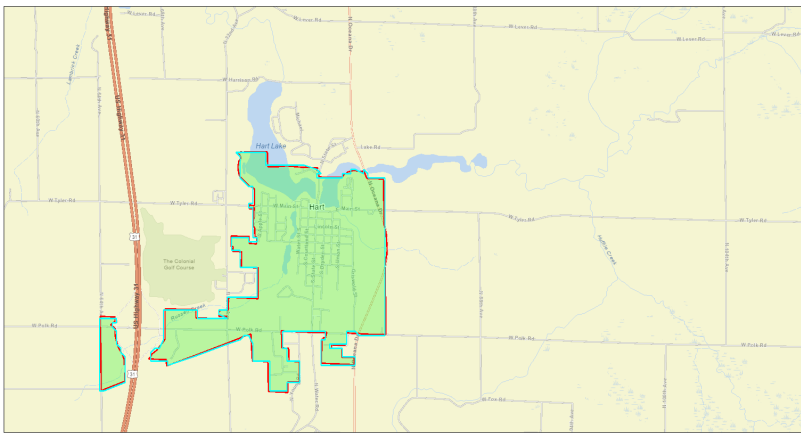
EJScreen Community Report

This report provides environmental and socioeconomic information for user-defined areas, and combines that data into environmental justice and supplemental indexes.

Hart, MI

City: Hart
Population: 2,074
Area in square miles: 1.94

A3 Landscape

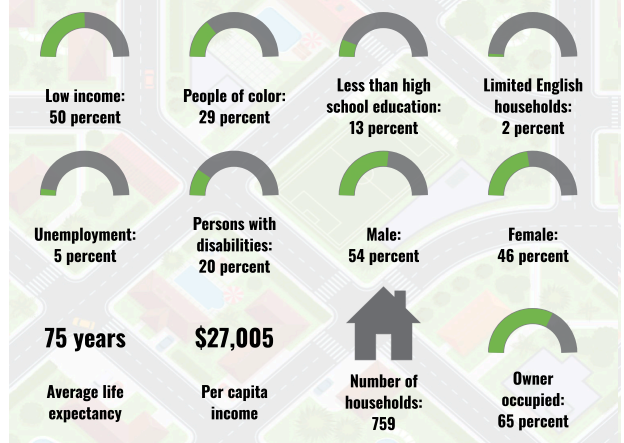


July 2, 2024
Project 1
EPA, GeoInfo, Geosoft, GeoTechnologies, Inc., METRISOLA, USDO, EPA, US Census Bureau, USDA, USFWS

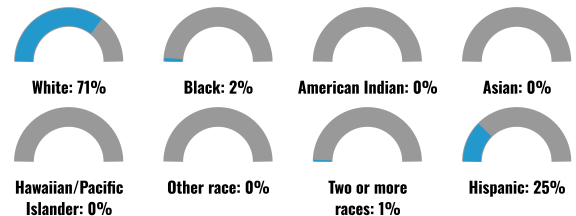
LANGUAGES SPOKEN AT HOME

LANGUAGE	PERCENT
English	86%
Spanish	13%
Total Non-English	14%

COMMUNITY INFORMATION



BREAKDOWN BY RACE



BREAKDOWN BY AGE



LIMITED ENGLISH SPEAKING BREAKDOWN



Notes: Numbers may not sum to totals due to rounding. Hispanic population can be of any race. Source: U.S. Census Bureau, American Community Survey (ACS) 2017-2021. Life expectancy data comes from the Centers for Disease Control.

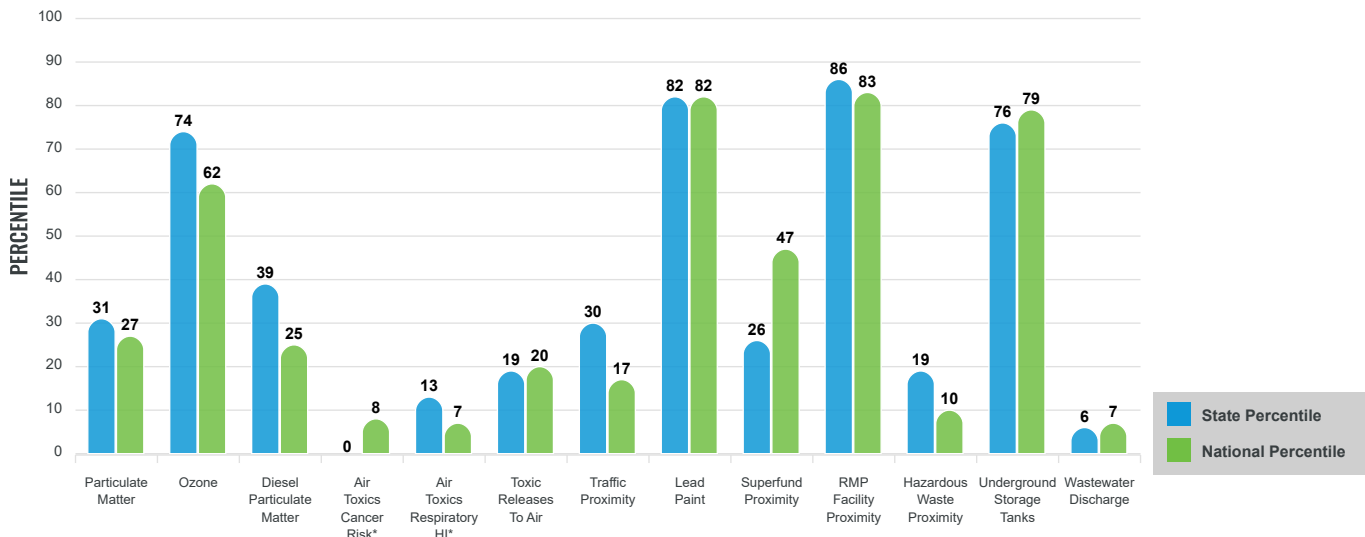
Environmental Justice & Supplemental Indexes

The environmental justice and supplemental indexes are a combination of environmental and socioeconomic information. There are thirteen EJ indexes and supplemental indexes in EJScreen reflecting the 13 environmental indicators. The indexes for a selected area are compared to those for all other locations in the state or nation. For more information and calculation details on the EJ and supplemental indexes, please visit the [EJScreen website](#).

EJ INDEXES

The EJ indexes help users screen for potential EJ concerns. To do this, the EJ index combines data on low income and people of color populations with a single environmental indicator.

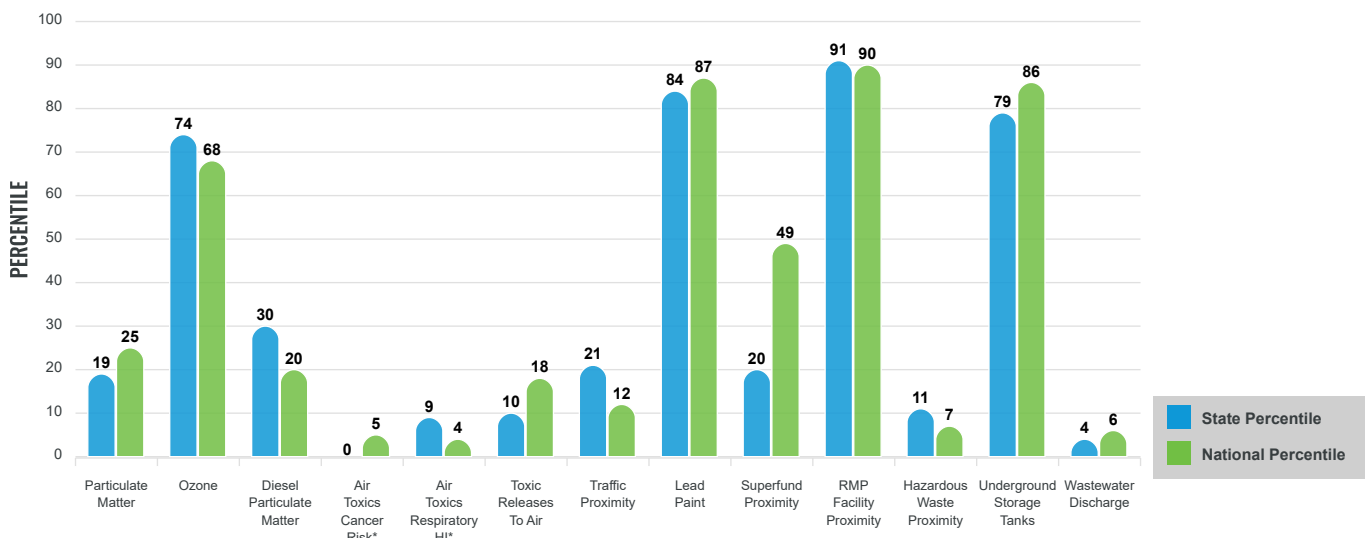
EJ INDEXES FOR THE SELECTED LOCATION



SUPPLEMENTAL INDEXES

The supplemental indexes offer a different perspective on community-level vulnerability. They combine data on percent low-income, percent linguistically isolated, percent less than high school education, percent unemployed, and low life expectancy with a single environmental indicator.

SUPPLEMENTAL INDEXES FOR THE SELECTED LOCATION



These percentiles provide perspective on how the selected block group or buffer area compares to the entire state or nation.

Report for City: Hart

EJScreen Environmental and Socioeconomic Indicators Data

SELECTED VARIABLES	VALUE	STATE AVERAGE	PERCENTILE IN STATE	USA AVERAGE	PERCENTILE IN USA
POLLUTION AND SOURCES					
Particulate Matter ($\mu\text{g}/\text{m}^3$)	6.6	8.51	11	8.08	13
Ozone (ppb)	60.5	60	49	61.6	44
Diesel Particulate Matter ($\mu\text{g}/\text{m}^3$)	0.0839	0.183	14	0.261	11
Air Toxics Cancer Risk* (lifetime risk per million)	10	19	0	25	1
Air Toxics Respiratory HI*	0.1	0.2	1	0.31	1
Toxic Releases to Air	16	2,500	6	4,600	10
Traffic Proximity (daily traffic count/distance to road)	2.4	120	11	210	7
Lead Paint (% Pre-1960 Housing)	0.65	0.38	76	0.3	83
Superfund Proximity (site count/km distance)	0.029	0.15	11	0.13	27
RMP Facility Proximity (facility count/km distance)	2.3	0.31	98	0.43	97
Hazardous Waste Proximity (facility count/km distance)	0.03	1.1	6	1.9	4
Underground Storage Tanks (count/km ²)	7.8	8	65	3.9	85
Wastewater Discharge (toxicity-weighted concentration/m distance)	8.4E-08	0.13	2	22	3
SOCIOECONOMIC INDICATORS					
Demographic Index	39%	28%	76	35%	63
Supplemental Demographic Index	19%	14%	79	14%	75
People of Color	29%	26%	69	39%	48
Low Income	50%	31%	80	31%	80
Unemployment Rate	5%	7%	56	6%	60
Limited English Speaking Households	2%	2%	80	5%	63
Less Than High School Education	13%	9%	77	12%	67
Under Age 5	6%	5%	66	6%	63
Over Age 64	18%	18%	55	17%	58
Low Life Expectancy	23%	20%	75	20%	79

*Diesel particulate matter, air toxics cancer risk, and air toxics respiratory hazard index are from the EPA's Air Toxics Data Update, which is the Agency's ongoing, comprehensive evaluation of air toxics in the United States. This effort aims to prioritize air toxics, emission sources, and locations of interest for further study. It is important to remember that the air toxics data presented here provide broad estimates of health risks over geographic areas of the country, not definitive risks to specific individuals or locations. Cancer risks and hazard indices from the Air Toxics Data Update are reported to one significant figure and any additional significant figures here are due to rounding. More information on the Air Toxics Data Update can be found at: <https://www.epa.gov/haps/air-toxics-data-update>.

Sites reporting to EPA within defined area:

Superfund	0
Hazardous Waste, Treatment, Storage, and Disposal Facilities	0
Water Dischargers	4
Air Pollution	0
Brownfields	0
Toxic Release Inventory	0

Other community features within defined area:

Schools	3
Hospitals	3
Places of Worship	6

Other environmental data:

Air Non-attainment	No
Impaired Waters	Yes

Selected location contains American Indian Reservation Lands*	No
Selected location contains a "Justice40 (CEJST)" disadvantaged community	Yes
Selected location contains an EPA IRA disadvantaged community	Yes

Report for City: Hart

EJScreen Environmental and Socioeconomic Indicators Data

HEALTH INDICATORS

INDICATOR	VALUE	STATE AVERAGE	STATE PERCENTILE	US AVERAGE	US PERCENTILE
Low Life Expectancy	23%	20%	75	20%	79
Heart Disease	8.5	6.6	88	6.1	89
Asthma	11.2	11.6	51	10	82
Cancer	7.9	6.6	83	6.1	87
Persons with Disabilities	20.8%	14.6%	84	13.4%	88

CLIMATE INDICATORS

INDICATOR	VALUE	STATE AVERAGE	STATE PERCENTILE	US AVERAGE	US PERCENTILE
Flood Risk	7%	7%	62	12%	51
Wildfire Risk	0%	0%	0	14%	0

CRITICAL SERVICE GAPS

INDICATOR	VALUE	STATE AVERAGE	STATE PERCENTILE	US AVERAGE	US PERCENTILE
Broadband Internet	22%	14%	79	14%	78
Lack of Health Insurance	6%	5%	63	9%	44
Housing Burden	No	N/A	N/A	N/A	N/A
Transportation Access	Yes	N/A	N/A	N/A	N/A
Food Desert	Yes	N/A	N/A	N/A	N/A

Report for City: Hart